




# Test Report

<b>Applicant</b>	:	
<b>Applicant Address</b>	:	
<b>Manufacturer</b>	:	
<b>Manufacturer Address</b>	:	
<b>Product</b>	:	AG button battery
<b>Model No.</b>	:	LR44, LR41, LR1130, LR1131, L521H, L621H, L736H, L1131H, L1130H, L1154H, L736, LR736, L1131, L1130, L1154, LR1154, L521, LR521, LR621, LR626, L626H, LR1120, L1120H, L1121H, L927H, L926H, L43H, L726H, L754H, L921H, L926H, L936H, L721H, L1142H, L625H, LR927, LR43, LR726, LR754, LR921, LR926, LR936, LR721, LR1142, LR625, L621, L626, L754, L921, L926, L1121, L936, L721, L1142, LR930, LR932, LR630, LR632, L930, L932, L630, L632, AG0, AG1, AG2, AG3, AG4, AG5, AG6, AG7, AG8, AG9, AG10, AG11, AG12, AG13, 23A, 27A, 625A
<b>Trademark</b>	:	
<b>Date of Issue</b>	:	Feb.27,2017

Test Requested	Selected test(s) as requested by client.
Test Method	Please refer to next page(s).
Test Results	Please refer to next page(s).
Conclusion	Based on the performed tests on submitted sample(s), the results comply with the Directive 2006/66/EC and its Article 4 amendment of Directive 2013/56/EU– Heavy Metals Content in Batteries.

Approved by: \_\_\_\_\_

(Kevin)





## Test Results:

Description for specimen 1 : AG button battery

Directive 2006/66/EC and its Article 4 amendment of Directive 2013/56/EU  
– Heavy Metals Content in Batteries.

Test Item(s)	Unit	Test Method (Reference)	Result	MDL	Limit
Cadmium(Cd)	% (w/w)	Acid digestion method, ICP-OES	N.D.	0.0010	0.0020
Lead (Pb)	% (w/w)	Acid digestion method, ICP-OES	N.D.	0.0010	-
Mercury (Hg)	% (w/w)	Acid digestion method, ICP-OES	N.D.	0.0001	0.0005

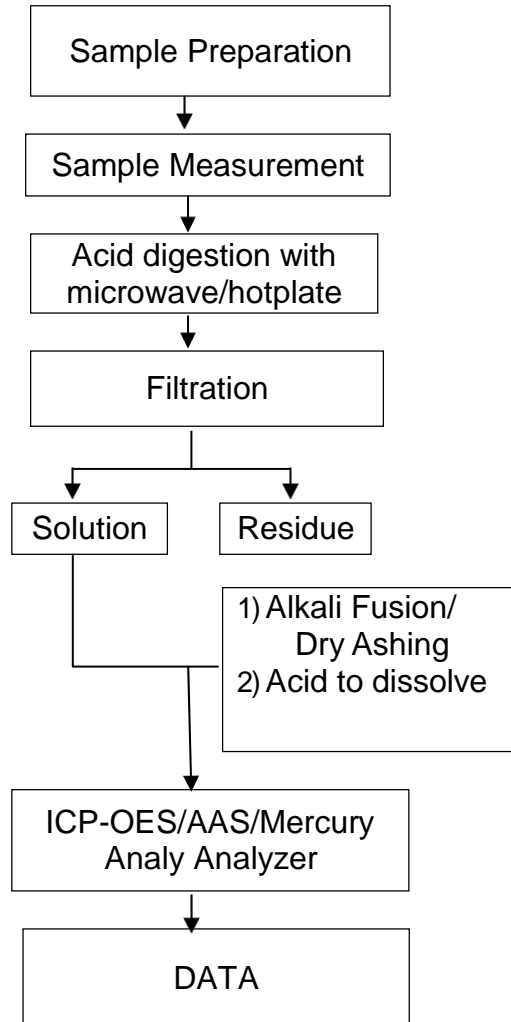
## Note:

1. mg/kg = ppm, 0.1% = 1000ppm
2. N.D. = Not Detected (< MDL)
3. MDL = Method Detection Limit

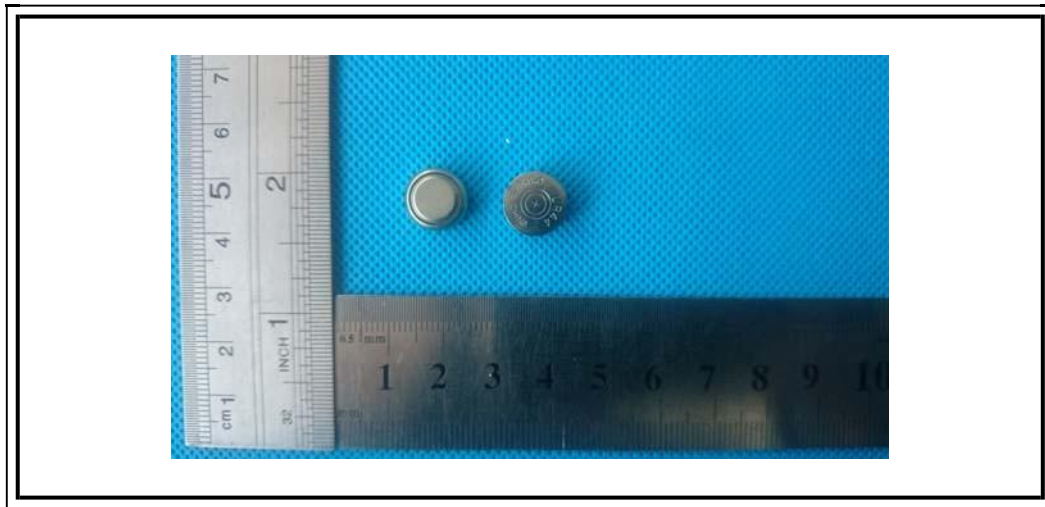


ATTACHMENTS

Battery Testing Flow Chart



Sample photo:



\*\*\* End of report \*\*\*